



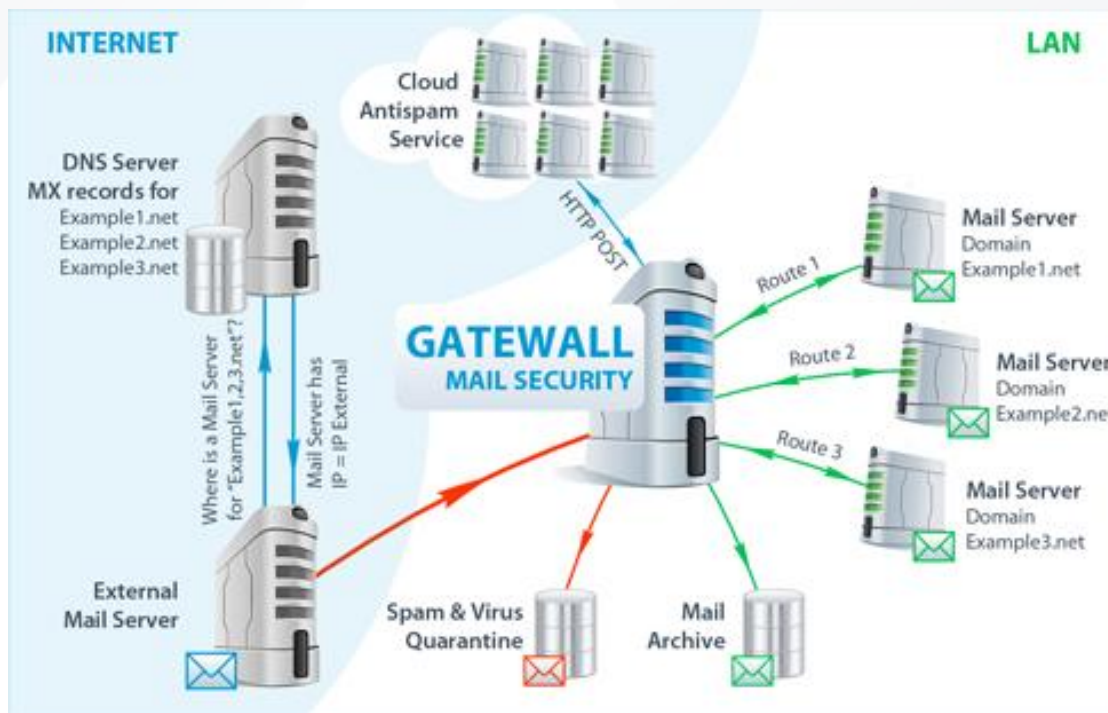
gateway
MAIL SECURITY

GATEWALL MAIL SECURITY

Server solution created to protect your e-mail from viruses,
spam and confidential information leaks

OPERATION SCHEME

- Data loss protection (DLP)
- Antivirus and phishing protection
- Cloud antispam
- IMAP connector
- Message backup
- Monitoring and statistics



CONTENT FILTERING OF INCOMING AND OUTGOING MESSAGES

GateWall Mail Security analyses incoming and outgoing messages and supports various types of filtering:

REGULAR EXPRESSIONS (REGEXP)

Confidentiality-related explicit expressions
EXAMPLE: Document and invoice numbers

DOCUMENT MATCH (DOCMATCH)

A database is created with confidential information patterns. All outgoing documents are then checked for matches

LEMMAZIZER

Morphological analysis of phrases.
The different “weight” of phrases is analyzed.
Operation threshold settings.

ENCODED DOCUMENTS

Detection of encoded messages and documents

DATA LOSS PREVENTION

Depending on the settings and operation thresholds defined, GateWall Mail Security can apply the following actions to messages:

BLOCK

Message sending is blocked

HOLD

Message is held for a period of time before being sent

NOTIFY

The message is sent, but a due notification is forwarded to the Security Engineer

CLOUD ANTISPAM



GateWall Mail Security employs the technologies of the world leader in spam analyses – Commtouch:Recurrent Pattern Detection (RPD™) and GlobalView™. A data center (spambot) network analyzes more than 2 billion messages on a daily basis, thus, providing worldwide email traffic monitoring.

The Recurrent Pattern Detection technology and a reputation service GlobalView allow real-time data analysis and IP addresses classification.

Therefore, spam attacks are blocked from the very moment they are launched.



ADVANTAGES OF CLOUD ANTISPAM

- High detection level – **more than 97%** of spam sources are blocked
- Low false response level – less than **one** in 1.5 million messages
- Global nature of the solution – you are protected from all kinds of spam in any language and format, including images
- Definitions updates in real time
- Saving company resources – the cloud solution filters most of the spam without constant manual filter adjusting

OTHER SPAM PROTECTION METHODS

During incoming message processing GateWall Mail Security performs several stages of filtering: connection, sender, recipient, and content filtering.

Apart from cloud antispam, GateWall Mail Security supports the following spam filtering methods:

DNS-based

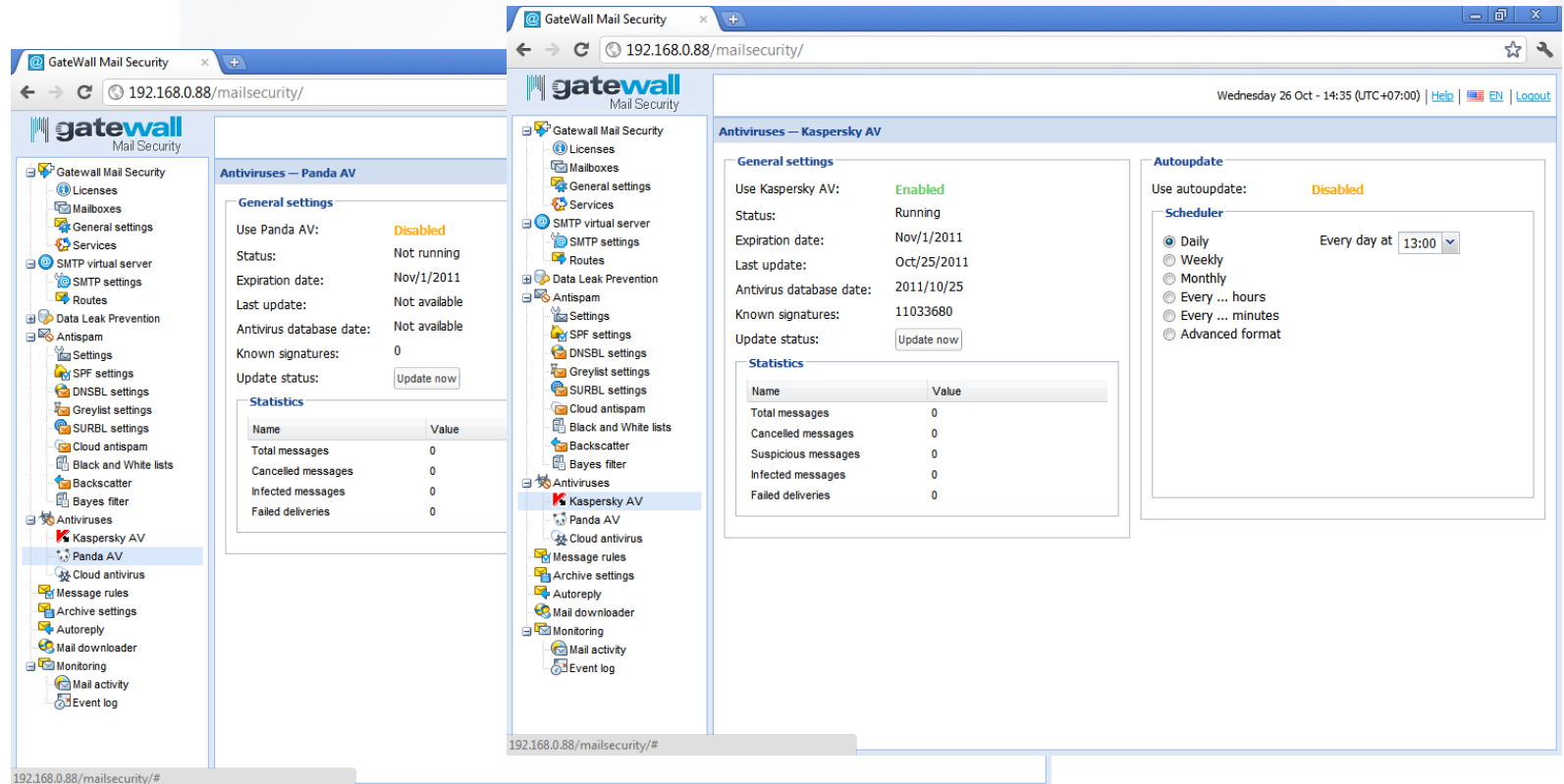
- DNSBL
- RHSBL
- Backscatter
- MX
- SPF
- SURBL

Statistics-based

Bayesian filtering method designed by Entensys

ANTIVIRUS PROTECTION

GateWall Mail Security uses three integrated antivirus modules: Kaspersky, Panda Antivirus and Entensys Zero-Hour Cloud Antivirus, all of them designed for email traffic monitoring, .



The screenshot displays the GateWall Mail Security web interface. The left sidebar shows a navigation tree with categories like Licenses, Mailboxes, General settings, Services, SMTP virtual server, Routes, Data Leak Prevention, Antispam, Settings, SPF settings, DNSBL settings, Greylist settings, SURBL settings, Cloud antispam, Black and White lists, Backscatter, Bayes filter, Antiviruses, Kaspersky AV, Panda AV, Cloud antivirus, Message rules, Archive settings, Autoreply, Mail downloader, Monitoring, Mail activity, and Event log. The main content area is divided into two sections: 'Antiviruses - Panda AV' and 'Antiviruses - Kaspersky AV'.

Antiviruses - Panda AV

General settings

- Use Panda AV: Disabled
- Status: Not running
- Expiration date: Nov/1/2011
- Last update: Not available
- Antivirus database date: Not available
- Known signatures: 0
- Update status: Update now

Statistics

Name	Value
Total messages	0
Cancelled messages	0
Infected messages	0
Failed deliveries	0

Antiviruses - Kaspersky AV

General settings

- Use Kaspersky AV: Enabled
- Status: Running
- Expiration date: Nov/1/2011
- Last update: Oct/25/2011
- Antivirus database date: 2011/10/25
- Known signatures: 11033680
- Update status: Update now

Autoupdate

Use autoupdate: Disabled

Scheduler

- Daily: Every day at 13:00
- Weekly
- Monthly
- Every ... hours
- Every ... minutes
- Advanced format

Statistics

Name	Value
Total messages	0
Cancelled messages	0
Suspicious messages	0
Infected messages	0
Failed deliveries	0

MAIL DOWNLOADER

GateWall Mail Security allows fetching mail from any POP3 accounts and distributing the received mail to the users' accounts.

Two mail download methods are supported :

- download mail from accounts with one user only;
- download mail from a mail account servicing several users, the so-called multiboxes.

The function can be easily used for email downloading from free email accounts, for example @gmail.com, @yahoo.com, *etc.*

INTEGRATION WITH OTHER EMAIL SERVERS



GateWall Mail Security features IMAP-integration for:

- Microsoft Exchange
- Lotus Domino

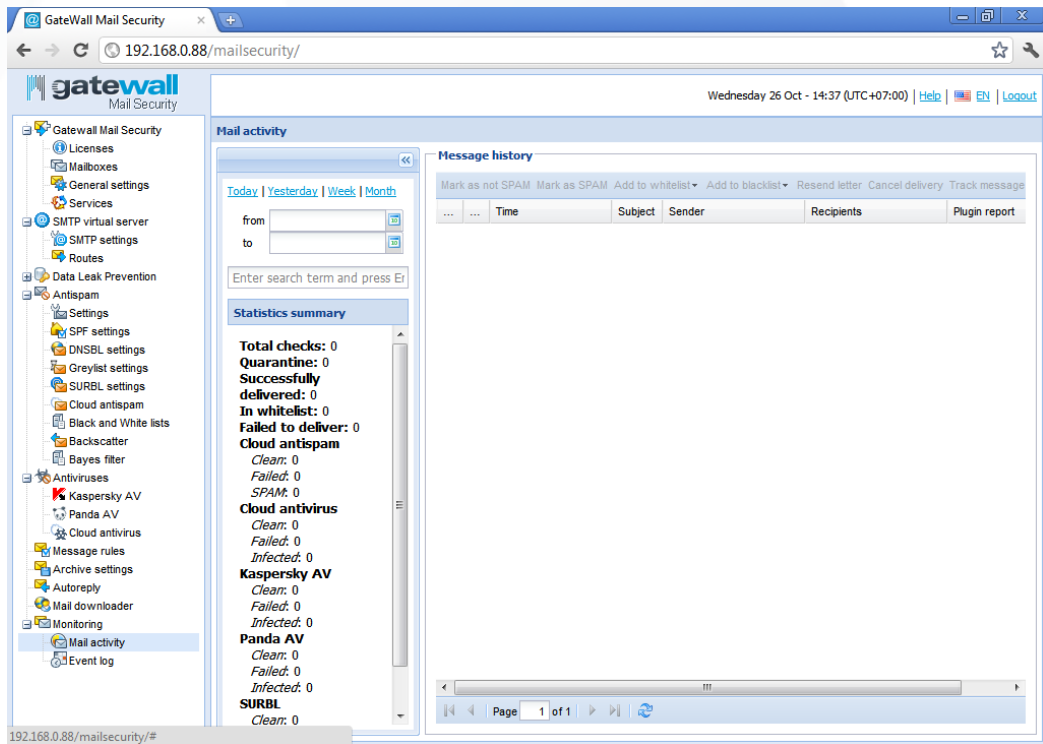
Integration allows creating a public IMAP folder on a remote mail server and messages processing therein.

MONITORING AND STATISTICS

GateWall Mail Security provides information on all messages processed by the solution server.

Message monitoring allows:

- filtering by date and processing status (delivered/blocked) or by sender/recipient address;
- push-sending messages blocked as spam;
- creating exception lists.



The screenshot displays the GateWall Mail Security web interface. The browser address bar shows the URL `192.168.0.88/mailsecurity/`. The page title is "GateWall Mail Security" and the date is "Wednesday 26 Oct - 14:37 (UTC+07:00)".

The interface is divided into several sections:

- Left sidebar:** A tree view of the system configuration, including "Licenses", "Mailboxes", "General settings", "Services", "SMTP virtual server", "SMTP settings", "Routes", "Data Leak Prevention", "Antispam", "Settings", "SPF settings", "DNSBL settings", "Greylist settings", "SURBL settings", "Cloud antispam", "Black and White lists", "Backscatter", "Bayes filter", "Antiviruses", "Kaspersky AV", "Panda AV", "Cloud antivirus", "Message rules", "Archive settings", "Autoreply", "Mail downloader", "Monitoring", "Mail activity", and "Event log".
- Mail activity:** A section for monitoring message activity, with tabs for "Today", "Yesterday", "Week", and "Month". It includes input fields for "from" and "to" addresses and a search bar.
- Statistics summary:** A section displaying various statistics:
 - Total checks: 0
 - Quarantine: 0
 - Successfully delivered: 0
 - In whitelist: 0
 - Failed to deliver: 0
 - Cloud antispam
 - Clean: 0
 - Failed: 0
 - SPAM: 0
 - Cloud antivirus
 - Clean: 0
 - Failed: 0
 - Infected: 0
 - Kaspersky AV
 - Clean: 0
 - Failed: 0
 - Infected: 0
 - Panda AV
 - Clean: 0
 - Failed: 0
 - Infected: 0
 - SURBL
 - Clean: 0
- Message history:** A table with columns for "Time", "Subject", "Sender", "Recipients", and "Plugin report". It includes a search bar and a "Page 1 of 1" indicator.

DATA BACKUP

GateWall Mail Security lowers the risk of data loss due to its data backup option.

The program supports scheduled backup, and data recovery from backup copies on the same or on a different server.

